



Vrije Universiteit Brussel

<http://prog.vub.ac.be/moves/>

MoVES

Modelling, Verification and Evolution of Software

Interuniversity Attraction Poles programme

Belgian State - Belgian Science Policy

Project coordinator: Vrije Universiteit Brussel

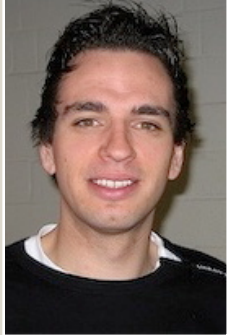


Agenda

- * Introduction to IAP - MoVES
- * Overview SSEL and PROG Labs
- * Research Presentations
- * Reception and Poster Session



Research Presentations



Coen De Roover

Behavioral Program Queries
using Logic Source Code
Templates



Mathieu Braem

Aspect-Oriented Workflow
Patterns for Web Service
Composition



Charlotte Herzeel

A Declarative Aspect Language,
based on Temporal Logic
for Event-driven Programming



Ragnhild van der Straeten

Inconsistency Management in
Model-Driven Engineering



Brecht Desmet

Context-Oriented Domain
Analysis



Dirk Deridder

Concept-Centric Coding for
Software Evolution in an Agile
Context



Agenda

- * Introduction to IAP - MoVES
- * Overview SSEL and PROG Labs
- * Research Presentations
- * Reception and Poster Session



IAP Programme ?

- * Support the formation of excellent interuniversity networks in basic research
 - * Across linguistic communities
 - * Encourage collaborations
 - * Promote complementarity and interdisciplinarity between research teams
 - * Facilitate the insertion of Belgian research teams in European and international networks
 - * ...



IAP Objectives

- * Setup of events to encourage collaborations
 - * Poster sessions, seminars, ...
- * Exchange of personnel, knowledge
- * Organisation of Joint scientific events
 - * workshops, conferences, ...
- * Joint doctoral actions
 - * co-promotorship, doctoral schools, ...
- * Co-authoring of publications
- * Establishing joint (EU) projects
- * Networking media
 - * website, newsletter, ...



MoVES Partners

- * Vrije Universiteit Brussel
- * Universiteit Antwerpen
- * Université catholique de Louvain
- * Université Libre de Bruxelles
- * Facultés Universitaires Notre-Dame de la Paix Namur
- * Université de Liege
- * *Katholieke Universiteit Leuven*
- * Université de Sciences et Technologie de Lille
- * Imperial College London
- * Technische Universiteit Delft



MoVES Research Axes

Modelling, Verification and Evolution of Software

* **Modelling**

- * Modelling Languages
- * Programming Languages

* **Model Verification**

- * Analysis of and reasoning about programs/models
- * Consistency checking, property verification
- * Techniques to compose, abstract or refine programs/models

* **Model Evolution**

- * Incremental evolution and co-evolution of programs/models
- * Restructuring of programs & models



MoVES Work Packages

- * (WP 1) Programming Languages
- * (WP 2) Modelling Languages and Restructuring
- * (WP 3) Composition, Decomposition, Recomposition
- * (WP 4) Consistency Checking and Co-Evolution
- * (WP 5) Refinement and Synthesis
- * (WP 6) Verification Methods and Tools
- * (WP 7) Incremental Design and Verification

Work Package Distribution

- (WP 1) Programming Languages
- (WP 2) Modelling Languages and Restructuring
- (WP 3) Composition, Decomposition, Recomposition
- (WP 4) Consistency Checking and Co-Evolution
- (WP 5) Refinement and Synthesis
- (WP 6) Verification Methods and Tools
- (WP 7) Incremental Design and Verification

	VUB	UA	UCL	ULB	FUNDP	ULg	INRIA-Futurs	IC	TUD
WP 1	X		X	X			X		
WP 2	X	X			X				X
WP 3	X			X	X		X		
WP 4	X	X	X		X				
WP 5			X	X	X			X	
WP 6	X			X		X			
WP 7				X	X	X			



Agenda

* Introduction to IAP - MoVES

* Overview SSEL and PROG Labs

* Research Presentations

* Reception and Poster Session

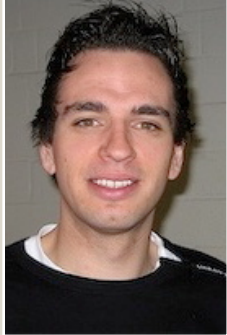


Agenda

- * Introduction to IAP - MoVES
- * Overview SSEL and PROG Labs
- * Research Presentations
- * Reception and Poster Session



Research Presentations



Coen De Roover

Behavioral Program Queries
using Logic Source Code
Templates



Mathieu Braem

Aspect-Oriented Workflow
Patterns for Web Service
Composition



Charlotte Herzeel

A Declarative Aspect Language,
based on Temporal Logic
for Event-driven Programming



Ragnhild van der Straeten

Inconsistency Management in
Model-Driven Engineering



Brecht Desmet

Context-Oriented Domain
Analysis



Dirk Deridder

Concept-Centric Coding for
Software Evolution in an Agile
Context



Agenda

- * Introduction to IAP - MoVES
- * Overview SSEL and PROG Labs
- * Research Presentations
- * Reception and Poster Session



Announcements

<http://prog.vub.ac.be/moves/>

- * PhD Course:
Advanced Topics in Software Evolution
 - * March 14 (@UMH), March 20 (@UCL)
- * **Journée Thématique en Génie Logiciel**
 - * May 21 (@UCL)
- * More information at <http://www.grascomp.be/>

- * **PhD Defense - Gilles Geeraerts - April 20 (@ULB)**

- * **Postdoctoral Position @ PRECISE-FUNDP**
 - * Contact Prof. Dr. Patrick Heymans
phe@info.fundp.ac.be



Vrije Universiteit Brussel

Belgian Francqui Chair

2007

Engineering Requirements for Mission-Critical Software Systems

Prof. Dr. Axel van Lamsweerde

Université catholique de Louvain

<http://ssel.vub.ac.be/francqui/>



Inaugural Lecture

***Modelling Software Systems and
Engineering their Requirements:
Why Should we care?***

Thursday April 26, 16:00 @ VUB